

DX Series Touch Panel



LTECH

DX7 Color Temperature Touch Panel

1. Technical Specs:

DX7 Color Temperature Touch Panel

| | | | |
|----------------|-------------------|----------------|-------------------|
| Input Voltage: | 100~240Vac | Working Temp.: | -30°C~55°C |
| Output Signal: | RF 2.4GHz, DMX512 | Package Size: | L113×W112×H50(mm) |
| Control Mode: | 4 Zones Control | Weight(G.W.): | 225g |

R4-5A CV Receiver

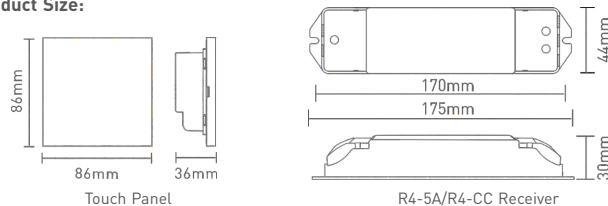
| | | | |
|-------------------|----------------------------|----------------|------------------|
| Input Voltage: | 5~24Vdc | Working Temp.: | -30°C~55°C |
| Max Current Load: | 5A × 4CH Max. 20A | Dimensions: | L175×W44×H30(mm) |
| Max Output Power: | 100W/240W/480W(5V/12V/24V) | Package Size: | L178×W48×H33(mm) |
| Wireless Signal: | 2.4GHz | Weight(G.W.): | 150g |

R4-CC CC Receiver

| | | | |
|------------------|----------------------------|----------------|------------------|
| Input Voltage: | 12~48Vdc | Working Temp.: | -30°C~55°C |
| Output Voltage: | 3~46Vdc | Dimensions: | L175×W44×H30(mm) |
| Output Current: | CC 350/700/1050mA×4CH | Package Size: | L178×W48×H33(mm) |
| Output Power: | 1.05W~48.3W×4CH Max 193.2W | Weight(G.W.): | 165g |
| Wireless Signal: | 2.4GHz | | |

Note: Receiver is sold separately.

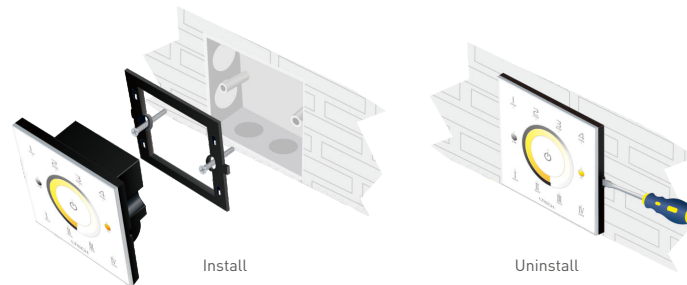
2. Product Size:



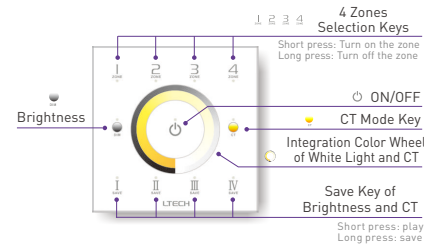
LTECH

DX7 Color Temperature Touch Panel

3. Installation Instruction:

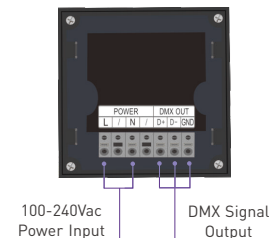


4. Key Functions:

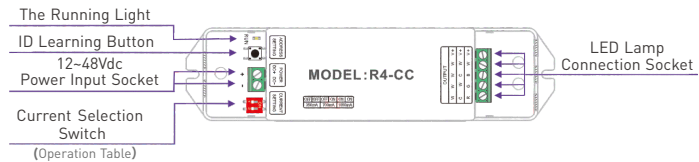


* Long press to turn on/off the tone.

5. Terminals:



6. Operating Instruction for Receiver:



(Operation Table)

| | | | | | |
|-------|-------|--------|----|----|----|
| OFF | OFF | OFF | ON | ON | ON |
| 350mA | 700mA | 1050mA | | | |

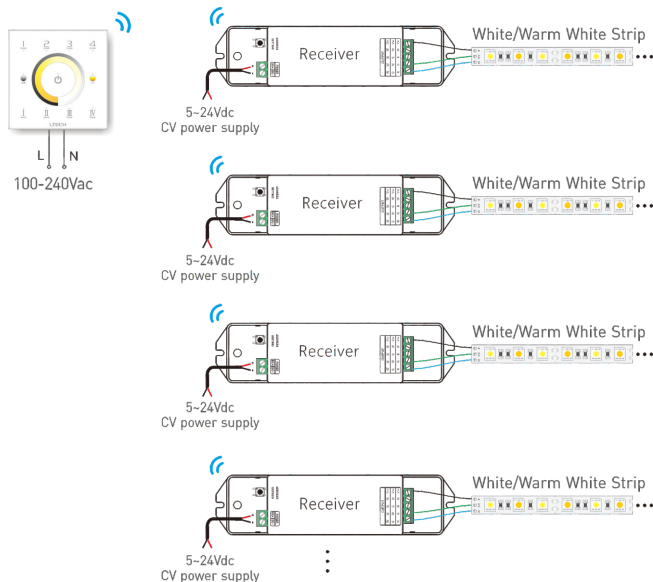
7. Match/Clear Code between Touch Panel & Receiver:

Match code: Short press "ID learning button" on the R4-5A/R4-CC receiver, the running light keeps on. Then press the matching zone key on the touch panel, the running light flicker several times, match successfully.

Clear code: Long press "ID learning button" on the R4-5A/R4-CC receiver for 5s, the running light flicker several times, deactivate the matching successfully.

Attn: Multiple receivers could be synced to each zone.

8. Wireless Wiring Diagram:



9. DMX Wiring Diagram:

